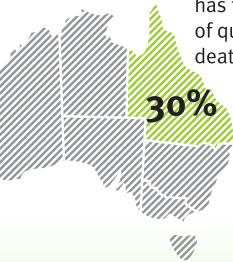


QUAD BIKES

Queensland

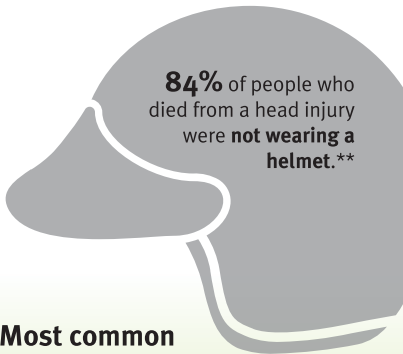
has the **highest** rate of quad bike-related deaths in Australia.



Around 1 in 5 quad bike incidents results in a head injury.**



84% of people who died from a head injury were **not wearing a helmet.****

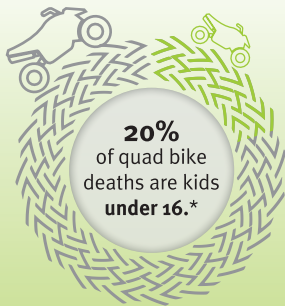


Key risks are **uneven terrain, turning and speed.**



Most common

injuries from quad bikes are crush, head and cervical spine injuries.



Queensland
Government

* Queensland data ** National data